



# Coordinating Wildlife Biologist Quarterly Partners' Report



Leslie Elmore- Statewide

October - December 2022

## Position Update

Over the last quarter my focus has been preparing tools and documents for wildlife biologists to take full advantage of EQIP's Bobwhite, Grasslands, & Savannas Initiative. I have also worked with four field offices, and counting, to help them understand the extent of applicability of the BGS Initiative and ways we can implement it to benefit producers and grassland birds.



➔
DOWN WITH TREES
➔

Bobwhite, Grasslands, & Savannas Initiative

Restoring grasslands & healthy forests

*BGSI is helping to remove cedar from the prairies and selectively thin hardwoods to restore grasslands and savannas for the wildlife dependent upon them.*



Other Programs	Acres Impacted
<b>EQIP-Monarch Initiative</b>	
314 - Brush Management	7
315 - Herbaceous Weed Control	5
511 - Forage Harvest Management	195
647 - Early Successional Habitat Dev't	3
<b>Total</b>	<b>210</b>

Conservation Planning
◆ 29 landowner contacts
◆ 15 site visits
◆ 2 conservation proposals



Local SWCDs

**Thank you so much for your support!**

**Without this partnership we would not be able to provide assistance to private landowners and positively impact conservation in Oklahoma!**



# Coordinating Wildlife Biologist Quarterly Partners' Report



Leslie Elmore - Statewide

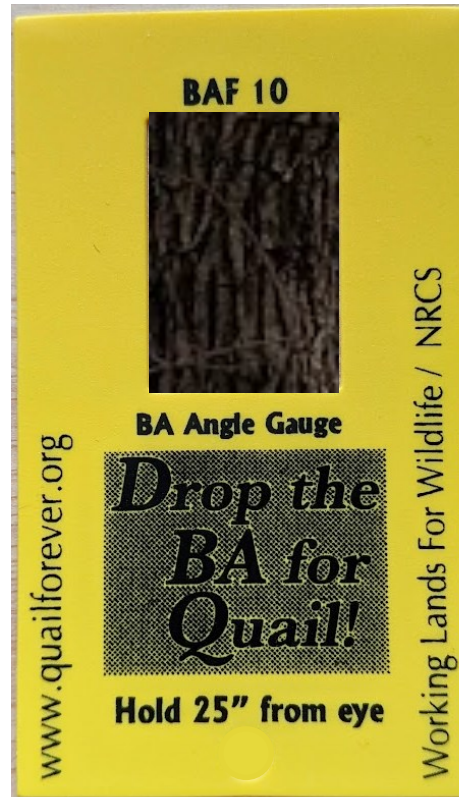
October - December 2022

## Outreach & Education

- I presented to first-year students in a natural resources course at Oklahoma State University, discussing Quail Forever's mission and structure and my role as Coordinating Wildlife Biologist partnering with NRCS.
- I co-presented a training with the NRCS State Biologist to NRCS-partner biologists working within the Bobwhite, Grasslands, & Savanna Initiative coverage area. We practiced using the Bobwhite Wildlife Habitat Evaluation Guide and the Savanna Assessment Guide, as well as how to use different tools in these assessments.



*This producer was removing hardwoods and planting food plots before he learned that a natural food plot will plant itself with selective thinning.*



*This simple basal area angle gauge can be used by biologists and land managers working to reduce the BA, allowing sunlight to reach the ground and stimulate herbaceous growth. When quail are the goal aim for a BA of <30 sqft.*

Outreach & Education	Count
Events/Workshops	2
Participants	95
Presentations Delivered	2
<b>Total</b>	<b>2</b>

Leslie Elmore

Coordinating Wildlife Biologist II  
Central OK + Crosstimbers Region

100 USDA Suite 206  
Stillwater, OK 74074

405-714-8886  
lelmore@quailforever.org



# Coordinating Wildlife Biologist

## Quarterly Partners' Report



Leslie Elmore - Statewide

October - December 2022



*I had the chance to visit a property where Monarch RCPP provided financial assistance for brush management during my first year with Quail Forever as Monarch RCPP Coordinator.*

Training/Meeting Type	Outcome
<b>Regional Outreach</b>	I had the great privilege of traveling to the Georgia-Florida line to visit a Tall Timbers quail plantation and research site. I attended Tall Timber's annual fundraiser and had the best time at the reception for the 2022 honoree! Visiting with so many Texans, Georgians, and Floridians committed to quail conservation was an enormously encouraging experience.  Audrey Hawk, Georgia Outreach Coordinator for QF, and I had lunch together and discussed our projects, and learned about each other's successes and trials.
<b>webinars</b>	"Using Fire to Build Soil Carbon"
<b>Reading and CE</b>	I have read the final two published papers required for Forest Stand Improvement (CPS-666) job approval authority.

### Looking Forward to ...

- A few more days in the field assessing properties for BGSi.
- Gaining Forest Stand Improvement (CPS-666) job approval authority.
- Working with Great Plains Grassland Initiative focus groups and conducting assessments.
- Reconnecting with co-workers from around the country and lending a hand at the Pollinator Pathways pavilion at Pheasant Fest in Minneapolis, MN. (And doing some birding ahead of the meeting!)

*If anyone wishes to discuss habitat projects or knows others who are interested, please contact me at the information below.*

Leslie Elmore  
Coordinating Wildlife Biologist II  
Central OK + Crosstimbers Region

100 USDA Suite 206  
Stillwater, OK 74074

405-714-8886  
lelmore@quailforever.org



# Coordinating Wildlife Biologist **USDA**

## Quarterly Partners' Report



Tanner Swank— Northwest Oklahoma

October–December 2022

### Position Update

This quarter once again provided multiple opportunities for training and outreach. With GPGI expanding to other reaches of the state, and opportunities to broaden my biologist skills and knowledge. EQIP and GPGI seasons are fast approaching, so field visits and evaluations for ranking will soon take over once again.

### Another Year

With COVID in the rear view mirror, getting back to in-person trainings and meetings. There has been a large addition to new field staff who needs field trainings before EQIP field evaluations start and seeing all the new faces on the team has been very enjoyable. Everyone is very eager to learn and quick to pick up new tools for their arsenal.



A GPGI prospective property along the Kansas line, across the state line on the OK line.

#### Conservation Planning

- 15 Landowner Contacts
- 10 Site Visits
- 1 Projects with Acres

Other Programs	Acres Assessed	Acres Impacted
<b>CTA</b> USDA/Nonprogram/State Cost Share		1,840
<b>EQIP</b> Brush Management, Conservation Cover, Forest Stand Improvement, Wetland Restoration, Prescribed Fire		
<b>OLAP</b>		
<b>CRP</b> General, Grasslands		
<b>GPGI</b> Brush Management, Prescribed Grazing/burning, IPM	13,000	
<b>Total</b>	<b>13,000</b>	<b>1,840</b>



Local SWCDs

**Thank you so much for your support! Without this partnership, I wouldn't be able to provide assistance to private landowners and positively impact conservation in Oklahoma!**



### Outreach & Education

- I organized a Grassland summit meeting in Woodward, for northwest producers to attend. The objective of this was to raise awareness and interest in the GPGI framework and cedar control and prescribed fire.
- I gave an interview for High Plains Journal for a wildlife, drought, and quail article for ranchers.
- The whole Oklahoma team attended the Oklahoma Wildlife Foundation Gala in OKC. The event was an annual banquet fundraiser and gathering.
- I gave several grassland presentations to various groups at different events across the state.
- I attended the annual partners timber lands quail hunt/QF annual meeting in broken bow OK.

There were over 40 producers that attended the Grassland Summit in Woodward!

Outreach & Education	Count
Newsletter Articles/State Facebook Articles Written	1
Conservation/Outreach Event	2
Workshops	1
<b>Total</b>	<b>4</b>



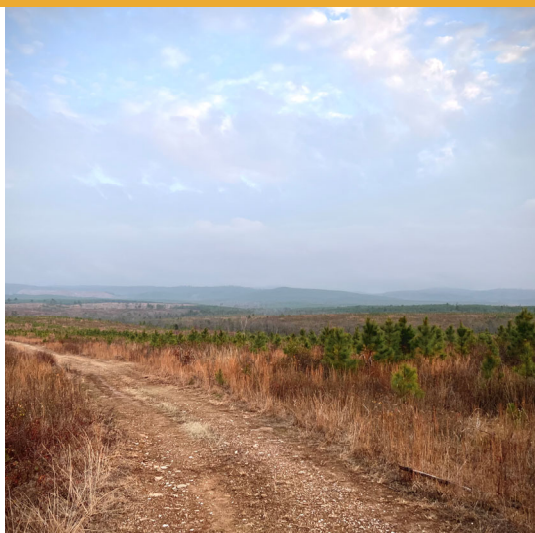
# Coordinating Wildlife Biologist **USDA**

## Quarterly Partners' Report



**Tanner Swank - Northwest Oklahoma**

**October–December 2022**



First time attending the timberlands hunt, its amazing the amount of forage and productive habitat there actually is in SE OK!

Training/Meeting Type	Outcome
<b>PLJV CRP Training</b>	Received training for the new CRP SAFE in the OK panhandle, highlighting framework, potential, and how to implement the new program for producers.
<b>GPGI Training(s)</b>	Both received, and provided trainings for GPGI.
<b>EQIP Training</b>	Got an EQIP update training for field staff online, highlighting programs, CART questions, and other topics regarding FY23 programs.
<b>Bobwhite WHEG/ Forest/Cross Timbers Training</b>	Received training on both the new Bobwhite WHEG training, and received Cross Timbers forest training.

### Looking Forward

- I will be continuing to implement GPGI in NW OK, as well as assist other regions where GPGI is being applied for the first time. The interest in NW is growing rapidly, so hopefully soon we will be able to see results soon.
- I will be working with partners to host outreach meetings across the NW region, regarding programs and cedar removal. USFWS and ODWC will be assisting with these meetings as well.
- I will begin assessing and conducting the field

portion of applications that have been received. There are a high volume of cedar removal applicants throughout the region, so we will be plenty busy!

- I will be continuing to do the rain dance in hopes of getting some much need prescribed burns accomplished.
- I will be continue to both receive and provide trainings to partners and staff as needed/ requested.

*\*If anyone wishes to discuss habitat projects or knows others who are interested; please contact me at the information below.*



# Field Staff

## Quarterly Partners' Report



Zach Brewer - Northeast Oklahoma Counties

November-December 2022

During the last quarter I have been assisting field office staff and landowners with burn plan for the upcoming spring 2023 burn season. I have also been assisting field offices with forest inventory on a few EQIP application within my 15 county district. I have 7 EQIP applications that I will be assisting with during the upcoming FY23 funding year. The applications range from native grass planting to forest stand Improvement . Two of the 7 EQIP Application are had interest in the new Bobwhite, Grassland, and Savannas



- Conservation Planning**
- 9 Landowner Contacts
  - 3 New Cooperator
  - 3 Habitat Proposals & Conservation Plan
  - 9 Site Visits
  - 1 Survey and date Collection
  - 4 NRCS Planner Training
  - 4 Eligibility/ Ranking Assessment

Other Programs	Acres Impacted
CSP- Wildlife Habitat (420)	.4
CSP--Prescribed Burn Plan (338)	20.4
CSP-Firebreak (394)	3
CTA-Wildlife Habitat Planting (420)	1
CTA-Herbaceous Weed Control (315)	1
<b>Total</b>	<b>25.8</b>

**Thank you so much for your support!**



# Field Staff

## Quarterly Partners' Report



### Outreach & Education

**November-December 2022**

- On November 28th, I attended the **Indian Territory QF Chapter Meeting** . I was able to talk to chapter members about the Oklahoma quail population and upcoming outreach events
- Looking forward to helping with the **Indian Territory QF Chapter & Tall Grass Heritage QF chapter** youth mentor hunt on January 16th.
- Looking forward to helping and attending the **Indian Territory QF Chapter Banquet** in mid march.
- Looking forward to **Big Bluestem QF Chapter Banquet** in Late February



This photo was taken on the Ouachita National Forest during the Oklahoma QF Team Meeting habitat tour in Southeast Oklahoma Near Hochatown, OK.  
I was educated on the varies different management techniques the U.S. Forest Service is using.  
I on on the

Outreach & Education	Count
Presentations Delivered	0
Outreach Events	1
<b>Total</b>	<b>1</b>





# Field Staff

## Quarterly Partners' Report



Zach Brewer - Northeast Oklahoma Counties

November-December 2022

### Biologist's Point of View - Outreach Evening



This photo was taken at the National Wildlife Federation Grow More Outreach Training in North Tulsa on November 30 and December 1 as part of a joint training opportunity with NRCS & Oklahoma Conservation Commission.

Training/Meeting Type	Outcome
<b>National Wildlife Federation Grow more Outreach Training</b>	Learning how to better promote outreach events and to connect with the general public and agriculture producers. Also how to better promote NRCS programs and the ways programs can help improve property and operation of their farm or ranch.
<b>WLFW/ Bob White Quail, Grassland, and Savannah Initiative Training</b>	Learning how to use the new quail whег and do timber inventory needed for ranking the new bobwhite quail, Grassland, and savannah initiative practices. The new initiative is going to be a good path forward for quail habitat in the Cross Timber region of Oklahoma.
<b>Oklahoma QF State Staff Meeting</b>	Fellowship with the Quail Forever Oklahoma team and getting to see new country down in Southeast Oklahoma. Also getting to learn how quail use a pine & heavy timber landscape and new programs.

*\*If anyone wishes to discuss habitat projects or knows others who are interested; please contact me at the information below.*

Zach Brewer

1900 West Will Rogers Circle

580-651-7122

Farm Bill Wildlife Bio 2

Claremore, OK 74017

zbrewer@pheasantsforever.org

Northeast Oklahoma Counties