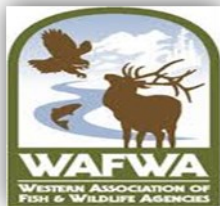




LESSER PRAIRIE CHICKEN INITIATIVE

QUARTERLY PARTNERS' REPORT

JANUARY - MARCH 2018



Jordan Menge

Lesser Prairie Chicken
Range Coordinator

105 E. Ave D

Mulshoe, TX 79347

806-664-0608

jmenge@pheasantsforever.org

It has been an excellent quarter this winter. Hopefully some moisture will be on its way here soon as we are in dire need of it. Some of the things that have been happening this quarter are the opportunity to attend a training and assist with our PF/QF Annual OK State Habitat convention in Oklahoma City, OK. We were able to get Oklahoma State university staff, Dwayne Elmore, Sam Fuhendorf and Laura Goodman to put on a training for the SWAT/WAFWA staff and some of the local ODWC folks to go more in depths of Rangeland management and patch burn grazing, I took quite a bit of knowledge away from this experience and hope to be able to utilize in my conservation toolbox to help landowners with management decisions on their property.

I also had the opportunity to partake in our 1st standalone Oklahoma PF/QF State Habitat convention, where we had over 60+ participants take part in seminar sessions that included talks about quail management, prescribe burning and other opportunities that are available to the landowners and chapter members.

This last quarter has been working with landowners on EQIP applications on potential brush management, prescribe grazing and water infrastructure to enhance their management objectives out on the land. I am continuing to do field work conducting inventories and developing conservation plans



Going over vegetation transects out in the field during Woodward, OK training.

Pictures in the Field



- **Producer installing wildlife waterers for implementation of 645 Upland Wildlife Habitat Management on their property.** (Left Picture)
- **Producer installed grazing exclosures to monitor forage production on property to help make management decisions to benefit LEPC and their cattle operation.** (Right Picture)



Training/ Presentation / Workshop	Location	Outcomes
Rangeland Management/ Patch burn grazing OSU	Woodward, OK	Patch burn grazing/ rangeland management training with Oklahoma State University alongside with SWAT and other partner biologist.
Texas State Technical Meeting	Austin, TX	Attended the Texas NRCS State Technical meeting in Austin, TX on progress of farm bill programs and conservation strategies going into next FY.
PF/QF OK State Habitat Convention	Oklahoma City, OK	Helped with running the convention, gave breakout session on LPCI in NW Oklahoma.

Other Programs	Conservation Planning	Certification of completed practice
EQIP Brush mgmt., Upland Wildlife Habitat mgmt., Herbaceous weed control	109 ac	745 ac
Total acres impacted	109	745

*“Take nothing but memories,
leave nothing but footprints!”*
Chief Seattle

Landowner Contacts	20
--------------------	-----------

Vegetation Transects	10
----------------------	-----------

CRP/CCRP Practices	Acres impacted
CP 38E –SAFE	539.6
Total	539.6

Jordan Menge

Lesser Prairie Chicken Range Coordinator
105 E. Ave D
Muleshoe, TX 79347
806-664-0608
jmenge@pheasantsforever.org



LESSER PRAIRIE CHICKEN INITIATIVE

QUARTERLY PARTNERS' REPORT

JANUARY - MARCH 2018



This past quarter I had the opportunity to network with people from several different agencies and private landowners at the Colorado Farm Show in Greeley and at the Lesser Prairie-Chicken Grazing Management Workshop hosted by Oklahoma State University. These events provided excellent opportunity to interact with people with a variety of backgrounds and discuss ways to continue and improve our delivery of conservation.

I also helped plan late-offer CP38E CRP contracts to help provide habitat acres directly targeted for Lesser Prairie-Chickens. I worked with landowners to address their grazing plans on current LPCI contracts and I helped develop prescribed grazing and upland wildlife habitat management plans for two new preapproved LPCI contracts in FY 2018.

Marina Osier

Range/Wildlife

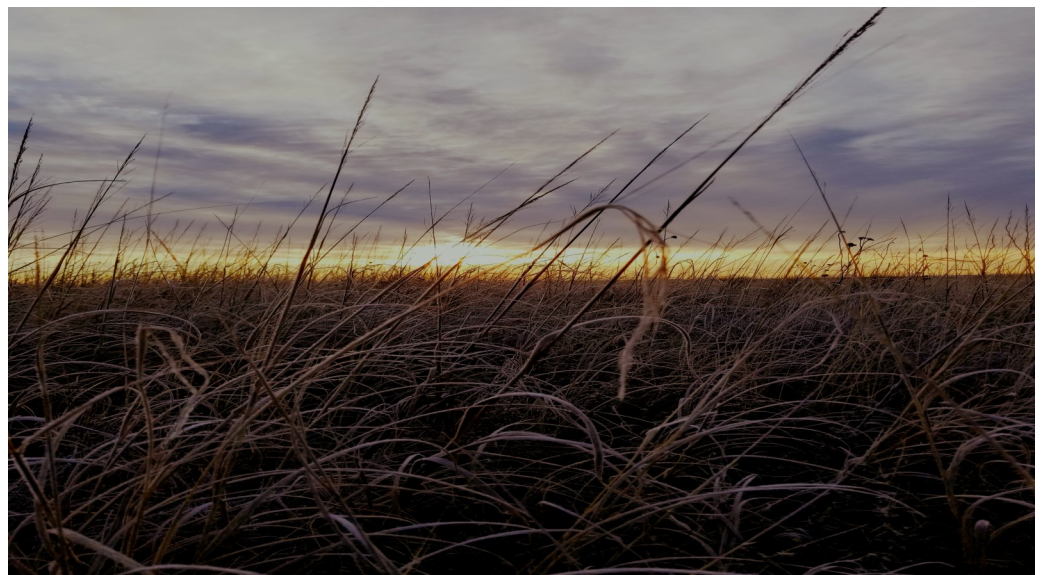
Conservationist

1501 S. Main St.

Lamar, CO 81052

515-201-1873

MOsier@pheasantsforever.org



Sunrise near a Lesser Prairie Chicken lek in Cheyenne county.



Pictures in the Field

- Marina helping out on a CRP seeding project in Baca county. (Left Picture)
- Four-wing saltbush on CRP in Baca county providing quail habitat. (Right Picture)



Training/ Presentation / Workshop	Location	Outcomes
Rangeland Management/ Patch burn grazing OSU	Woodward, OK	Patch burn grazing/ rangeland management training with Oklahoma State University alongside with SWAT
Colorado SRM	Pueblo, CO	Attended Colorado Section for Society of Range Management meeting in Pueblo, CO.
CACD Annual meeting	Loveland, CO	Attended Colorado Annual Conservation District meeting in Loveland, CO. Helped run a booth with partners.

Other Programs	Conservation Planning	Certification of completed practice
EQIP Brush mgmt., Upland Wildlife Habitat mgmt., Prescribe grazing, shrub establishment	12742.1	—
CSP	1460.1	—
CTA	19919	—
Total acres impacted	34121.2	—

“Nature, it seems, has a way of returning things to how they should be.”
Fennel Hudson

Landowner Contacts	15
---------------------------	-----------

CRP/CCRP Practices	Acres impacted
CP 38E –SAFE	990.79
CP 2- CRP	1501.5
Total	2492.29

Marina Osier
 Range/Wildlife Conservationist
 1501 S. Main St.
 Lamar, CO 81052
 515-201-1873
 MOsier@pheasantsforever.org



LESSER PRAIRIE CHICKEN INITIATIVE

QUARTERLY PARTNERS' REPORT JANUARY - MARCH 2018

This quarter I was able to attend several meetings and workshops including the USFWS Partners for Wildlife Burn meeting in Roswell where we discussed ways to bring prescribed fire back to Eastern New Mexico, the Audubon Adaptive Grazing Workshop where we learned new grazing techniques that benefit soil organic matter content, and the Grazing Management for LPC Workshop in Oklahoma where we discussed research over LPC and the current challenges we as conservationists' face.

Aside from meetings and workshops I spent time assisting the NRCS Staff with EQIP Application planning and mapping, various Conservation Technical Assistance with Landowners, going on practice checkouts, and running through LPC Flowcharts, WHEGS, and Habitat Threats. I attended several trainings including a Rangeland Inventory Training where we learned new inventory methods in hopes to become more efficient in the field, Terrace Training where we learned how to assess and plan terraces, and a combined Farming Implements/Techniques training at the NMSU Agricultural Research Center.

I wrapped up this quarter by training for Lek Surveys with NMDGF and beginning my Lek Survey routes, assisting WAFWA with Lek Surveys/Vegetation Monitoring in Texas, and planning out this year's Vegetation Monitoring Season. I was able to not only hear the legendary booms of the Lesser Prairie-Chickens, but had the opportunity to watch them display on the Lek as well- which was a really remarkable experience.

Amber Brown

Range/Wildlife

Conservationist

050 Hwy. 467

Portales, NM 88130

832-414-2671

abrown@pheasantsforever.org



LEPC displaying on Leks in NM.



Pictures in the Field

- **Attended Cover crop training observing winter crops.** (Left Picture)
- **Observed a Scaled Quail calling out in the morning, off of a cholla plant.** (Right Picture)



Training/ Presentation / Workshop	Location	Outcomes
Rangeland Management/ Patch burn grazing OSU	Woodward, OK	Patch burn grazing/ rangeland management training with Oklahoma State University alongside with SWAT and other partner biologist.
Toolkit Training	Portales, NM	Training to develop maps in toolkit from trainer to assist with applications.
Audubon Grazing Workshop	Portales, NM	Attended Audubon Grazing workshop with guest presenter, Dr. Allen Williams on high intensity grazing management system.

Other Programs	Conservation Planning	Certification of completed practice
EQIP Forage&Biomass planiting, cover crop, brush mgmt.	1155.6 ac 6900 ft.	555 ac. 39,960 ft
Total acres	1155.6 acres	555 acres

“Plans to protect air and water, wilderness and wildlife, are in fact plans to protect man.”
— [Stewart L. Udall](#)

Vegetation transects	10
Landowner contacts	20

CRP/CCRP Practices	Acres impacted
CP 2	208.5
Total	208.5

Amber Brown

Range/Wildlife Conservationist
050 Hwy. 467
Portales, NM 88130
832-414-2671
abrown@pheasantsforever.org



LESSER PRAIRIE CHICKEN INITIATIVE

QUARTERLY PARTNERS' REPORT
JANUARY - MARCH 2018



The last three months have flown by. I spent a lot of time training and trying to soak up as much knowledge as I could from the experts around me. Through the NRCS I have completed apprentice certification for Prescribed Burning. I'm excited to better assist landowners and get fire on the ground. I have already laid the ground work to assist the local prescribed burn association with plan development as well. In addition to burn training, I have worked with NRCS staff on tree planting/ windbreak design, watering facility engineering/design, and assessing range health.

I was privileged to attend the annual Pheasant Fest & Quail Classic in Sioux Falls, South Dakota in February. Along with numerous staff from PF and NRCS we shared the Working Lands for Wildlife (WLFW) program with visitors. While most were not aware of WLFW, many people thanked us for what are doing and said to "keep up the good work". It's refreshing to have people not directly impacted by our conservation efforts appreciate the power of this program and partnership. Pheasant Fest also provided the opportunity to talk with other PF/QF staff, agencies, and NRCS staff from across the country. I was able to glean new information and strategies to further wildlife habitat conservation in Oklahoma.

Lek surveys started in mid-March. I'm will continue assisting ODWC with a couple routes in Harper County. I'm excited to say that I have heard a couple LPC so far and I hope to hear many more. As with all LPCI staff, vegetation monitoring is getting underway. I have several trips to Kansas planned to assist WAFWA and monitoring for LPCI in OK will keep me busy through the summer.



Harper county Range Health Assessment. Vegetation from a quail's perspective

Haley Lockard

Range/Wildlife

Conservationist

1275 N. 190 Rd.

Buffalo, OK

816-868-7607

hlockard@pheasantsforever.org



Pictures in the Field

- **Brush Inventory in Woodward county. This place was 70-80% canopy cover.** (Left Picture)
- **Mechanical Cedar removal in Woodward County. This machine cut multiple trees at a time like a hot-knife through butter. Very Impressive!!!**(Right Picture)



Training/ Presentation / Workshop	Location	Outcomes
Pheasant Fest/Quail Classic	Sioux Falls, SD	Worked WLFW booth informing landowners of LPCI and conservation work across the 5-State
OK NRE Meeting	Tulsa, OK	Attended meeting to meet partners and talk about OLAP.
PF/QF OK State Habitat Convention	Oklahoma City, OK	Helped with running the convention, gave breakout session on LPCI in NW Oklahoma.

Other Programs	Conservation Planning	Certification of completed practice
EQIP Brush mgmt., Upland Wildlife Habitat mgmt., Prescribe burn	1844 ac.	—
Total acres	1844	—

“The outstanding scientific discovery of the twentieth century is not television, or radio, but rather the complexity of the land organism.”

Landowner Contacts	15
---------------------------	-----------

Survey –OLAP	61
---------------------	-----------

CRP/CCRP Practices	Acres impacted
CP 33 –SAFE	14.7
Total	14.7

Haley Lockard
 Range/Wildlife Conservationist
 1275 N. 190 Rd.
 Buffalo, OK 73834
 816-868-7607
hlockard@pheasantsforever.org