



### Position Update

This fall has been one of closing one door and opening others. CRP Grasslands wrapped up, which allowed for some catchup on CTA and monitoring on current projects. We recently hired a new FBB in Northeast, as well as a new state coordinator, so we are finally back up to full steam!

### Another Program Opportunity

A new Working Lands for Wildlife initiative, specifically speaking the Great Plains Grassland Initiative, has finally arrived. This one is different than other programs though, its also a change in mindset, and its taking northwest Oklahoma by storm. Working from the outside-in, impacting acres that are still mostly intact grasslands instead of doing complete cedar forest restorations. With this new mindset, producers are getting on board, and we will be able to impact many times the amount of acres as before, making our program dollars go much farther towards grassland conservation.



GPFI focuses on protecting large expanses of mostly intact grasslands, starting in areas with the fewest trees, and working inwards to places with the most trees.

#### Conservation Planning

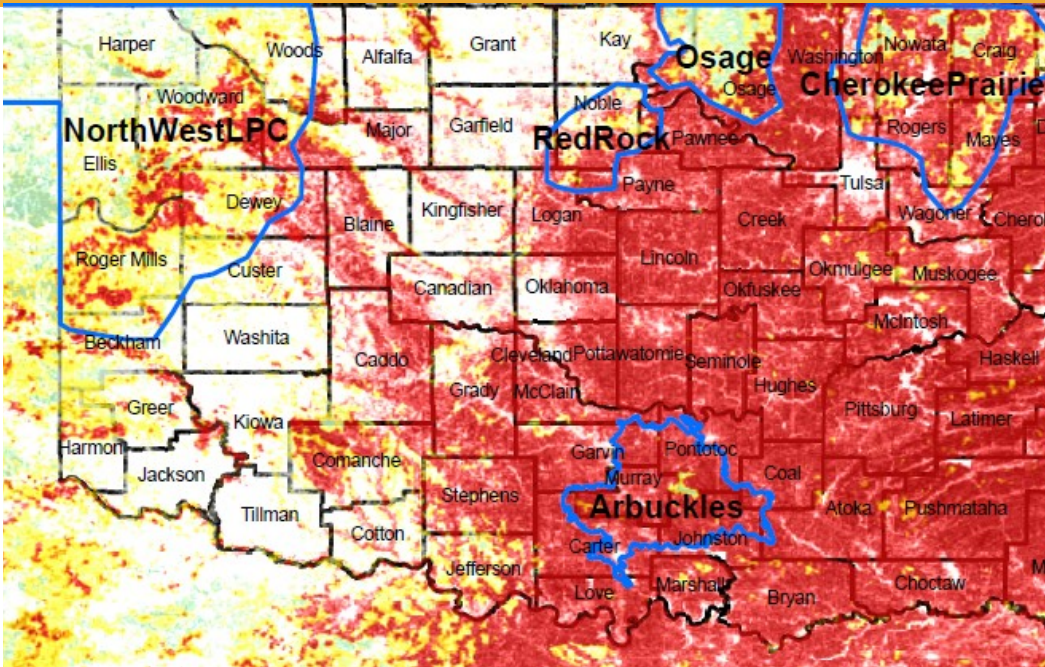
- 28 Landowner Contacts
- 2 Habitat Proposals & Conservation Plans
- 15 Site Visits

Other Programs	Acres Assessed	Acres Impacted
<b>CTA</b> USDA/Nonprogram/State Cost Share		14,000
<b>EQIP</b> Brush Management, Conservation Cover, Forest Stand Improvement, Wetland Restoration, Prescribed Fire	840	
<b>OLAP</b>		
<b>CRP</b> General, Grasslands	3,756	
<b>GPFI</b>	7,500	
<b>Total</b>	<b>12,096</b>	<b>14,000</b>



Local SWCDs

**Thank you so much for your support! Without this partnership, I wouldn't be able to provide assistance to private landowners and positively impact conservation in Oklahoma!**



### Outreach & Education

- I attended the Grand National Quail Hunt Club annual ranchers dinner in Enid. There I presented to the attendees about Quail Forever, what we do in Oklahoma, and how we can help improve and promote upland habitat.
- I attended a GPGI meeting with producers, PBA members, and partners in Perry. There we learned about the program, the science behind it, and how the program is going to work.
- I attended another GPGI meeting with producers, PBA members, and partners in Alva. There we learned about the program, the science behind it, and how the program is going to work. We also talked about how this is going to help the landowners in the area, since this area has funding this year.

Using some new technology, we can see areas that have been overrun with trees, and areas that can still be improved. The highlighted areas are areas of GPGI.

Outreach & Education	Count
Newsletter Articles/State Facebook Articles Written	1
Conservation/Outreach Event	3
Workshops	
<b>Total</b>	<b>4</b>





# Coordinating Wildlife Biologist **USDA**

## Quarterly Partners' Report



Tanner Swank - Northwest Oklahoma

October–December 2021



New PBA signs for properties participating in prescribed burning. Recognition is deserved for these landowners and getting the word out about assistance available.

Training/Meeting Type	Outcome
Partner PBA Meeting	Met with USFWS, ODWC, OSU, OPBA, OCC, and OPJV about a new program for prescribed burning. USFWS Partners program has a find pool for prescribed burning cost share for private landowners who burn through the PBAs. The program will be funneled through the conservation districts.
GPGI Meetings	Attended several meetings and trainings on how GPGI will be implemented, from the computer evaluation to the field evaluations.
Local partner PBA Meeting	Hosted a meeting with Woodward FD, Emergency Management, WW PBA, and State Parks about a prescribed burn training at Boiling Springs State park. The areas needed burned, and state parks, FD, and new PBA members were wanting training, so this was a perfect, small scale training on conducting prescribed burning.
LPC Partner Meeting	Attended meeting with OK partners regarding LPC status, work being done in OK, and strategies moving forward via programs and monitoring efforts.

### Looking Forward

- I will be implementing GPGI through NW OK, as the program sign-up period is officially open.
- I will also be implementing the next round of EQIP Monarch in NW OK. We have a strategy to utilize GPGI, General EQIP, and EQIP Monarch to combat cedars at all levels of infestation.
- Covid is still making events challenging to host, but we have been successful in adapting and adjusting to assure the safety of those who are wanting to attend.
- I will also be meeting with several ranches in the near future for their management needs.
- I will be hosting and presenting at the annual PBA meeting in Mooreland.
- Hunting season is going strong, but will be wrapping up, so hopefully we can get some moisture and end the season on a high note!

*\*If anyone wishes to discuss habitat projects or knows others who are interested; please contact me at the information below.*

Tanner Swank  
 Coordinating Wildlife Biologist Woodward OK, 73801  
 Woodward, Blaine, Major, Dewey, Ellis

3300 Oklahoma Ave  
 620-566-7179  
 tswank@pheasantsforever.org